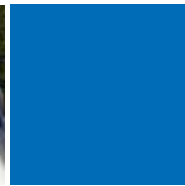


# eNcompass **PDT-300i**

packet data terminal



Always in contact means always in control. With global coverage from the eNcompass PDT-300i, you're never out of touch.

The new low-profile eNcompass PDT-300i gives you the power to respond faster and make the best use of *all* your resources. Its two-way real-time messaging, tracking and monitoring capabilities help you cut costs, improve customer service and boost operational efficiency.

## features

The low profile, low-maintenance eNcompass PDT-300i from EMS SATCOM provides global satellite coverage, creating an exceptional solution for near real-time mobile data communications.

- GPS tracking and two-way messaging
- AES 256 encryption
- Configurable and upgradeable software over the air
- Variable GPS reporting rate, depending on speed
- Battery backup
- All-in-one rugged packaging
- No moving parts
- Wide range power input
- Panic button
- Satellite signal indicator

**EMS**  
SATCOM

## where the PDT is used

### Environmental Monitoring

- Monitor specific territories to help differentiate between innocent alarms and real environmental threats.

### Utilities

- Increase productivity and improve worker safety with an uninterrupted work flow (always on)

### Public Safety

- Respond decisively to fast-changing situations – deploy field resources where they're needed most

### SCADA

- Telemetry acquisition of data in near real-time
- On board processor can directly interface with RTU
- Ease of installation and no antenna pointing required

### Marine

- Vessel monitoring
- Work boat tracking, monitoring and messaging

## specifications

### Power

Input Voltage	9Vdc-36Vdc, nom per SAE J1455
Receive Mode	300mA (max) @ 12V
Transmit Mode	1A (max) @ 12V

### Interfaces

Communications	RS-232, Digital I/O
Mounting	3-point mount, metal base

### Frequency

Rx/Tx	L-Band Iridium
-------	----------------

### GPS

Accuracy	< 3m
Channels	12
Data Format	NMEA 0183

### Dimensions

Weight	< 3 lbs. (<1.36kg)
Size	9" diameter x 2.2" high (22.86cm x 5.59cm)

### Environmental Specifications

Operating Temperature	-30°C to +50°C (-86F to +122F)
Storage Temperature	-55°C to +85°C (-67F to 121F)

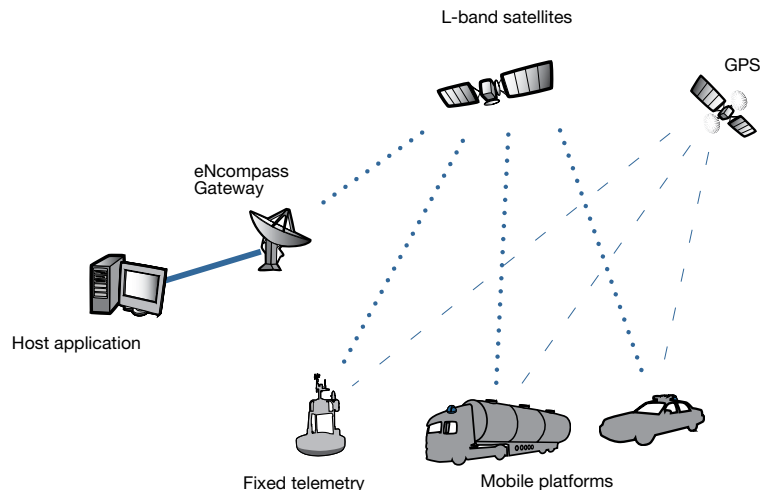
IP 67

These specifications are subject to change without notice. Printed in Canada 10/08.

## coverage map



eNcompass PDT-300i coverage is global



**SKYMIRA** LLC  
SPACE TECHNOLOGY • EARTHLY PEOPLE

For more information  
visit [www.skymira.com](http://www.skymira.com)  
or call 866.521.0540